



“Jesus said unto him,
If thou canst believe,
all things are possible
to him that
believeth.”

—Mark 9:23

The President's Message

Our Guiding Behavior of *trusting and assuming goodness in intentions* at first blush appears to be one of the easiest behaviors to embrace. However, from a young age (and with good reason most of the time), we are trained to be of a suspicious nature through formal and informal instruction and experiences. It seems to be far more natural to work back the other direction—first distrusting until enough reasonable proof can be compiled to make us believe otherwise. However, I am suggesting that if one exhibits this behavior of *trusting and assuming goodness in intentions*, you are really engaging in an exercise of empathy for those you regularly interact with. We are all going to fall short at times, however, how we work together to improve how we demonstrate this Guiding Behavior is what distinguishes our ministry organization from other types of organizations.

I am also suggesting that each part of our Vision is directly tied to this Guiding Behavior of trusting and assuming goodness in intentions:

As we provide healing and hope close to home, it will be necessary for us to focus on doing what it takes to support each other in our various areas of responsibility, trusting each other as we continually work at providing better service for those whose care we are charged with. Helping our communities grow and thrive, and being a trusted partner for life, will mean we need

to be patient, empathetic, and continually looking to accentuate what is positive in our attempts to improve the daily lives of those we serve – those needing care, and those we work with.

Delivering value in everything we do: How we interact with each other; how we choose to view our fellow Associates when things are difficult or the situation stressful, (as well as during the good times), I think directly correlates with the level of excellence we can provide as a healthcare ministry that is based mainly on human interactions.

I also believe that when we collectively focus on continually improving quality of service using our Guiding Behavior of *trusting and assuming goodness in intentions*, we can inspire each other to reach new levels. As we reach new levels of improvement, the people we serve will take notice and place their trust in our services. This synergy then creates a circle of potential for our “faith based mission” to achieve great things.

—Ray Gibbons,
CEO



2010 Festival of Trees Report

Once again, we wanted to thank all of our SAMC—BC Associates who did so much to make this year's Festival of Trees such a success. It is with all honesty when we say that none of this could have happened without YOU!

2008 Festival of Trees Net: \$23, 834.98

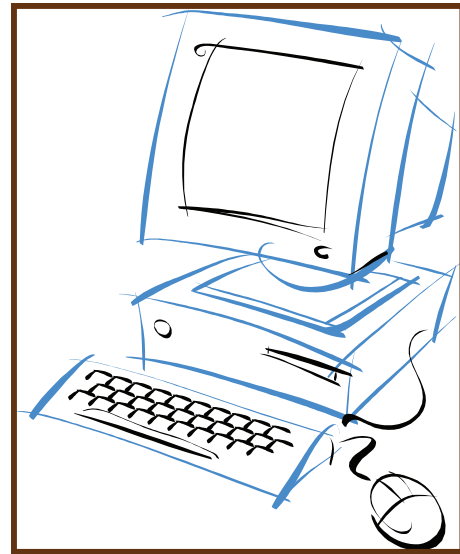
2009 Festival of Trees Net: \$24,154.99

This Year's Festival of Trees Net: \$29,975.01



Important Message from J.T.

This is a reminder from the I.T. Department to help remain HIPAA compliant and PLEASE, only login to your own Accounts (e-mail and system) here at work. Don't share your passwords with anyone else; allow anyone else to access your accounts; or, login to someone else's accounts, and do not leave passwords in places where they can easily be viewed by others (on desks, monitors, phones, etc...).



February Birthdays

Michelle P.	February 2
Jeffery M.	February 6
Janice M.	February 8
Gregory G.	February 11
Susan D.	February 16
Amy G.	February 16
Samica N.	February 16
Mary P.	February 18
Kathleen C.	February 20
Loretta H.	February 25
Sheilah H.	February 26
April W.	February 28

Notes from Human Resources:

Change in Smoking Areas:

Just a quick reminder: The only designated place for Associates to smoke is in the kiosk in the back dock / Purchasing area. Smoking in cars or in the ER parking lot is not acceptable, as some patients have complained about the smell of smoke on clothes and visually seeing hospital and health care center Associates smoking.

Please see Jerry in HR if you have any questions.

Taxes:

It's almost time to do your taxes, and many have asked about the W-2 forms. Trinity Health will be mailing the forms to your homes by the end of the month. For those who were employed by CHI, they will also be mailing your W-2s to your homes by January 31, 2011. What you need to do is make sure that your mailing address is updated with both organizations (CHI and Trinity Health). You can make the changes with Trinity through the "My Self Service" site or by contacting Human Resources. If you need to make any address changes with CHI please call 1-(888) 450-9450.

See Jerry or Stacy in HR if you have any questions.

The Infection Busters—

FLU SEASON ALERT!

If you think that foregoing your flu shot will be a decision that will only affect you, perhaps you should consider the following:

The flu can spread from one person to another up to six feet apart and most healthy adults may be able to infect others beginning 1 day before symptoms develop and up to 5-7 days after becoming sick!

Flu vaccines have been given for more than 50 years and have a very good safety track record. The vaccines are made the same way each year and their safety is closely monitored by the Centers for Disease Control and Prevention and the Food and Drug Administration. Hundreds of millions of flu vaccines—including more than 80 million H1N1 vaccines in 2009-2010—have been given safely.

Flu seasons are unpredictable. They can begin early in the fall and last late into the spring. As long as flu season isn't over, it's not too late to get vaccinated, even during the winter. Getting a flu vaccine is the best way to protect yourself and your family. If you miss getting your flu vaccine in 2010—please, go and see the outpatient nurse's station—flu season doesn't usually peak until January or February. The flu vaccine offers protection all season long. For more information, visit <http://www.flu.gov>

SAMC—BC Infection Control

A Thank You—

Thank you all my friends at SAMC—BC. I can't tell you how very much my husband and I appreciate all of your support and understanding. Thank you for the beautiful arrangement. It helps to brighten our days knowing that there are so many people out there that care.

I also wanted to take the time to mention what a wonderful and kind benefit the bereavement time off is. That alone helps/means more than you know. Thanks again to all for your thoughts and prayers

Sincerely,

Monica M. and Family

2010 Community Benefit Report

2010 Dollars Invested in Services that Benefit Our Community:

Cost of Charity Care Provided: **\$722,254**

Unpaid Cost of Government Programs: **\$120,681**

Cost of Community Benefit provided to Broader Community:
\$610,461

Total Community Benefit: \$1,453,396

Services Delivered:

7/1/2009-6/30/2010

18,976 Outpatient Visits

7,524 Patients seen in Emergency Room

1,012 Acute Hospital Admissions

1,383 Surgeries Performed

125 Babies Born

Infection Control Question and Answer

Are disposable materials that are contaminated with blood or other body fluids considered to be infectious waste?

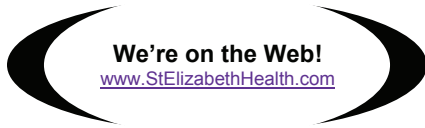
Materials contaminated with blood or other body fluids are considered to be subject to the infectious waste law only if they are saturated with blood or body fluid. Saturated means that the fluid will ooze or drip out with or without compaction. In other words, blood-stained bandages or dressings and sanitary napkins are not considered infectious.



**Saint Alphonsus Medical
Center—Baker City**

3325 Pochontas Road
Baker City, Oregon 97814

Tel: (541) 523 - 6461
Fax: (541) 523 - 8151



The Pulse is a monthly newsletter
published by
Saint Alphonsus Medical Center—
Baker City
©2011 SAMC-BC



Associate Forums:

January 17, 2011—

7:30 a.m.

Noon

3:00 p.m.

Location: CR-15

Mission Moment

I was a little saddened to put away my old calendar. Not only did it have some great pictures on it, but I had recorded some events that brought back good memories as I leafed through the pages. It was fun to relive some of the past.

I have a friend that does that all of the time. For him, what happened in high school and college embodied the greatest time of his life, and nothing that he does today can compare with that time. So most of the time you will find him sitting with his memories instead of creating new ones.

We are beginning a new year – and a new decade. It stands before us like a clean slate or an empty canvas, waiting for us to create whatever beauty we desire. We are only limited by our imaginations. Nothing will hold us back unless we allow it. Truly, together we can change the world.

I love how Jesus took the most unlikely people and, as it says in Acts 17:6, "...turned the world upside down." He took the ravens to feed Elijah and the donkey to speak to Balaam.

He specializes in making the amazing out of the common. And He has given us the task to do the same.

So as we tread softly into the New Year, let us use the past victories on which to build our future. Let us not be timid, but boldly advance with our mission to serve together to heal and improve the health of our communities. Let us be the impetus for transformation!

Suddenly I'm liking my new calendar a whole lot!

—*Jerry Nickell*

